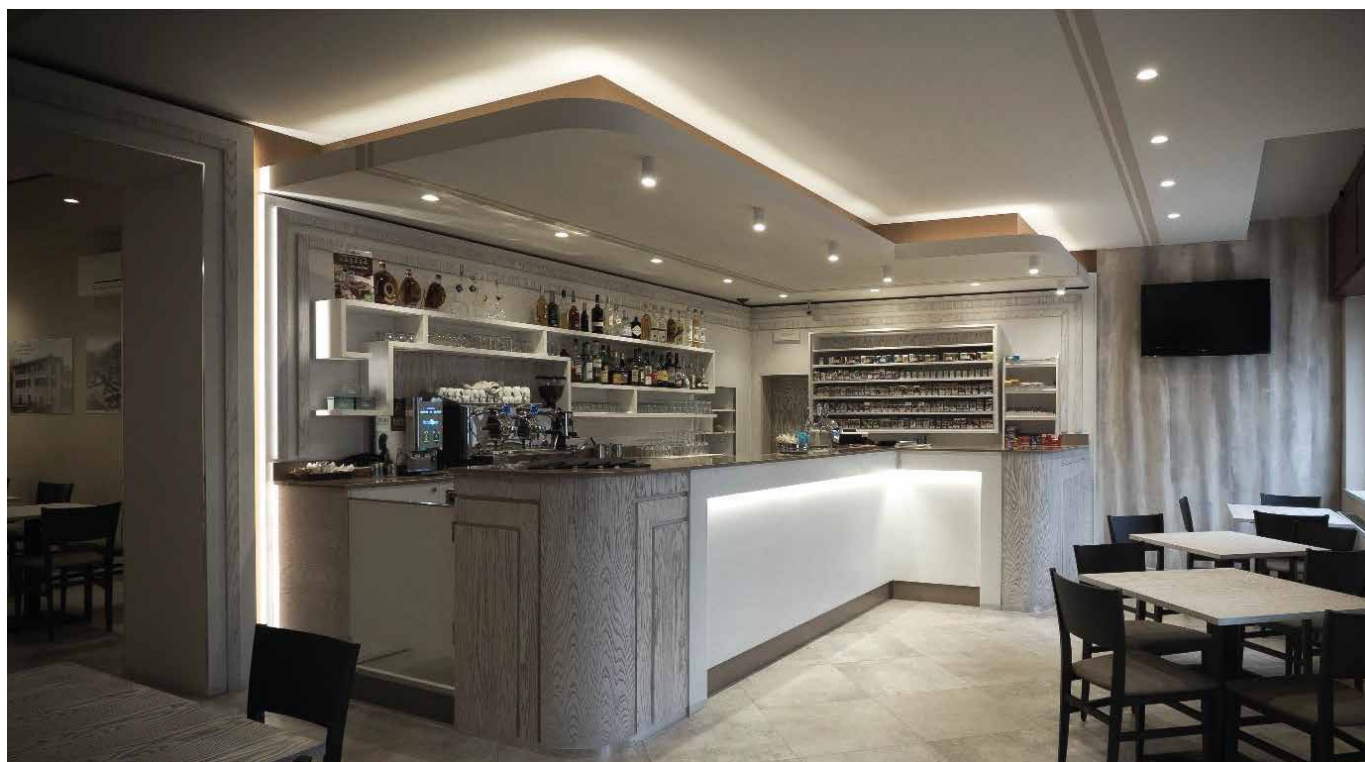
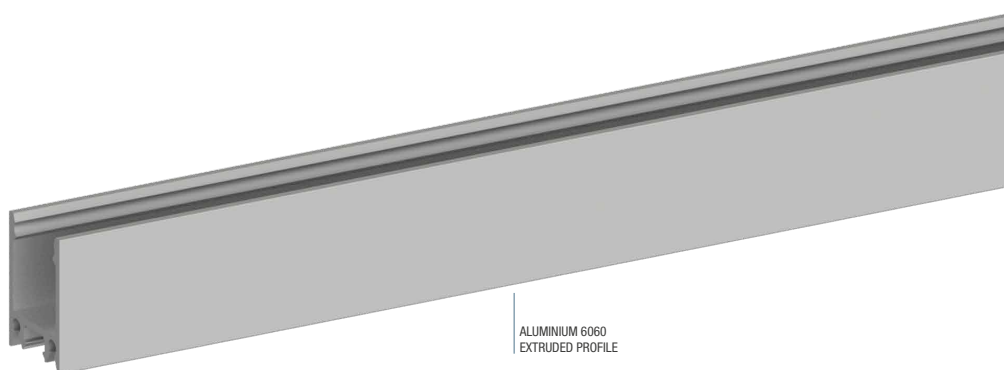


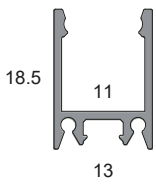
# H1

Small-size anodized aluminium 6060 extruded profile, designed and produced to be installed also on very thin surfaces. Extremely easy to install, thanks to the brushed snap-in diffuser, concealed magnets, and steel springs. Ideal to house and dissipate LED Strips, and especially suited to illuminate and embellish kitchen and bathroom cabinets, under-wall cupboards, furniture, closets, shelves and display cases.

 EXTRUDED IN ITALY



1:1 SCALE



BASIC CODES

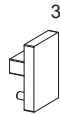
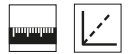
**PA.H1.**

LENGTH

- 1 1000mm
- 2 2000mm
- 3 3000mm

FINISHES

- 1 Matt white RAL9003
- 2 Matt black RAL9005
- 7 Brushed aluminium



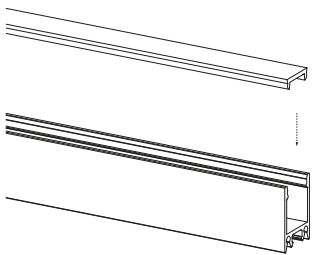
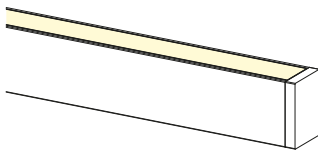
BASIC CODES

**SH1.**

FINISHES

- 1 White
- 2 Matt black
- 7 Brushed aluminium

Side aluminium closing support. Easy and quick to install, by exerting a slight side pressure.



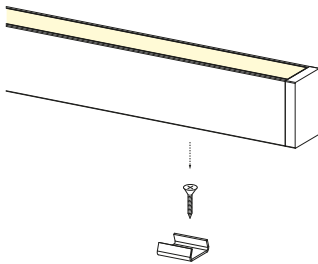
BASIC CODES

**PA.12PE41.**

LENGTH

- 1 1000mm brushed
- 2 2000mm brushed
- 3 3000mm brushed

Brushed snap-on diffuser. The diffuser can be easily removed for maintenance operations.

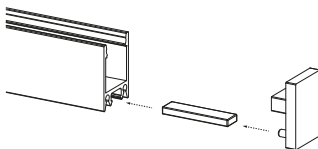


BASIC CODES

**PA.GG02**

Steel clip for snapping onto flat surfaces. The clip hooks onto the rear slots, which will be perfectly adhered to the surface. 12xM2.5 screws included.

NB. We recommend No. 1 Clip per 500mm



BASIC CODES

**NDL40XP5X2**

Magnets to glue on for fixing on smooth metal surfaces.

NB. We recommend No. 1 magnet every 150mm (Max. attraction force 1.60kg).

Code example: H1 Profile + 1000mm Length + Brushed Aluminium Finish = Code: PA.H1.17